



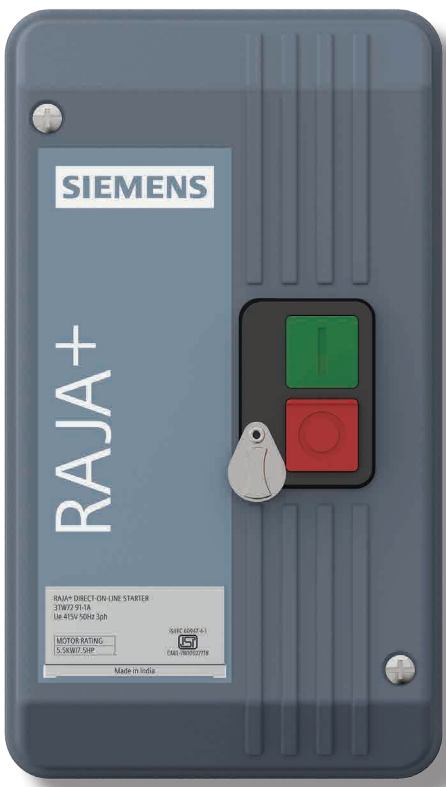
RAJA+ Agriculture Starters & Controllers

Soch Nayi, Vishwaas Wahi!

Price List w.e.f. 5th April, 2026



SIEMENS



With Raja+, Siemens establishes itself as a trusted leader in the production of premium control products to cater the evolving agriculture sector and is a cutting-edge, dependable, and cost-effective motor starter solution.

Here's a starter that is in line with current technology trends and is backed with **Siemens' 125-year legacy.**

Soch Nayi, Vishwaas Wah!



Monitoring and Protection
Protects motor and pumps from various faults



Operator Safety
Ensures safety of operator



World Class Quality
Standard Meets stringent IEC, IS Standards for reliability and Performance



Uniform Design Platform
Ease of maintaining inventory and spares



Wide Band Coils
Reliable operation even during supply fluctuation



Submersible Pump Ratings Easy to select starters for all types of agriculture applications

Overview

Tried, Tested and Trusted Start with Siemens Agriculture Starters.

// **Now Siemens offers a wide range of starters to cater to diversified demands from Agriculture Sector. These products are specially designed to provide smart, easy and reliable motor starting solution.** //

They employ tried and tested Siemens contactors and relay, complying to the latest national and international standards. This ensures the right start for motors requiring direct online starting or star delta starting.

**FASD
Starter
10-75 HP**



**DOL Controller
3-10 HP**

**FASD Controller
with WLC
15-30 HP**

**DOL Controller
with WLC
3-10 HP**



**ADOL
7.5-17.5 HP**

**ASD
10-25 HP**

**DOL
0.33-10 HP**

Direct-On-Line Starters



Type numbers: 3TW729

- Motor Rating at 415V 3ph 50Hz: 0.33 – 10HP | 0.25 – 7.5kW
- Contactors | OLRs: 3TS contactors | 3US/3UW overload Relay
- Coil Voltage: 200 – 400V | 352 – 456V AC, 50Hz
- Standard marking: ISI/IEC 60947-4-1
- IP42



Name	Motor Rating At 415V 3ph 50Hz		Starter Type	Contactors	Thermal Overload Relay	Relay Range (A)	MRP
	HP	kW					
RAJA+ DOL 0.33HP	0.33	0.25	3TW7291-1A*64	3TS3010-0A##-08KA0	3UW5102-0J	0.63-1	4470.-
RAJA+ DOL 0.75HP	0.75	0.55	3TW7291-1A*66	3TS3010-0A##-08KA0	3UW5102-1A	1-1.6	4470.-
RAJA+ DOL 1HP	1	0.75	3TW7291-1A*68	3TS3010-0A##-08KA0	3UW5102-1C	1.6-2.5	4470.-
RAJA+ DOL 1.5HP	1.5	1.1	3TW7291-1A*69	3TS3010-0A##-08KA0	3UW5102-1D	2-3.2	4470.-
RAJA+ DOL 2HP	2	1.5	3TW7291-1A*71	3TS3010-0A##-08KA0	3UW5102-1F	3.2-5	4470.-
RAJA+ DOL 3HP	3	2.2	3TW7291-1A*72	3TS3010-0A##-08KA0	3UW5102-1G	4-6.3	4470.-
RAJA+ DOL 5HP	5	3.7	3TW7291-1A*74	3TS3010-0A##-08KA0	3UW5102-1J	6.3-10	4470.-
RAJA+ DOL 7.5HP	7.5	5.5	3TW7291-1A*75	3TS3210-0A##-08KA0	3UW5102-1K	8-12.5	4470.-
RAJA+ H DOL 7.5HP	7.5	5.5	3TW7291-1A*77	3TS3210-0A##-08KA0	3UW5102-2A	10-16	4770.-
RAJA+ DOL 10HP	10	7.5	3TW7291-1A*78	3TS3210-0A##-08KA0	3UW5102-2B	12.5-20	4945.-

*Enter code for coil voltage, 50Hz (B for 200 - 400V AC, D for 260 - 460V AC, W for 332 - 456V AC)

Enter Code for operating coil voltage, 50Hz (Z6 for 200-400V, R0 for 415V)

Extra MRP of 355 INR for RAJA+ DOL starters 3TW72931A... (0.33-5HP) with 18A contactor 3TW72931A... are IEC 60947-4-1: 2012 compliant without ISI mark

Automatic Star-Delta Starters

Type numbers: 3TE729

- Motor Rating at 415V 3ph 50Hz: 10 – 25 P | 7.5 – 18.5kW
- Contactors | OLRs: 3TS contactors | 3US overload Relay
- Coil Voltage: 200 – 400V | 352 – 456V AC, 50Hz
- Standard marking: ISI/IEC 60947-4-1
- IP42



Name	Motor Rating At 415V 3ph 50Hz		Starter Type	Line Contactors	Delta Contactors	Star Contactors	Thermal Overload Relay	Relay Range (A)	MRP
	HP	kW							
RAJA+ ASD 10HP	10	7.5	3TE72910AW74	3TS3210-0A##-08K	3TS3210-0A##-08K	3TS3210-0A##-08K	3UW5102-1J	6.3-10	19730.-
RAJA+ ASD 12.5HP	12.5	9.3	3TE72910A*75	3TS3210-0A##-08K	3TS3210-0A##-08K	3TS3210-0A##-08K	3UW5102-1K	8-12.5	20700.-
RAJA+ ASD 15HP	15	11	3TE72910A*77	3TS3210-0A##-08K	3TS3210-0A##-08K	3TS3210-0A##-08K	3UW5102-2A	10-16	21245.-
RAJA+ ASD 20HP	20	15	3TE72910A*78	3TS3300-0A##-08K	3TS3300-0A##-08K	3TS3210-0A##-08K	3UW5202-2B	12.5-20	24945.-
RAJA+ ASD 25HP	25	18.5	3TE72910A*79	3TS3300-0A##-08K	3TS3300-0A##-08K	3TS3210-0A##-08K	3UW5202-2C	16-25	28620.-

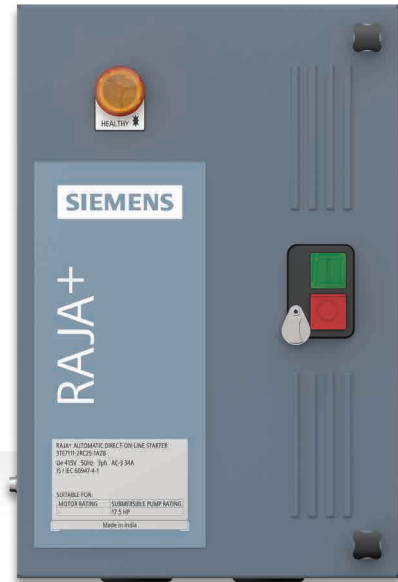
*Enter code for coil voltage, 50Hz (B for 200 - 400V AC, W for 332 - 456V AC)

Enter Code for operating coil voltage 50Hz (Z6 for 200 - 400V, R0 for 415V)

Automatic Direct-On-Line Starters

Type numbers: 3TE7111

- Motor Rating at 415V 3ph 50Hz: 7.5 – 17.5HP | 5.5 – 13kW
- Clearly defined ratings for submersible pump set & for 3-phase Motors
- Contactors | OLRs: 3TS contactors | 3US/3UW overload Relay
- Coil Voltage: 200 – 400V | 260 – 457V AC, 50Hz
- IP42
- LED Indication: Indicating the incoming power supply availability & healthiness
- Special Line Monitoring Relay for Agriculture Starters provide protection against Phase Loss, Phase Reversal, Phase Unbalance, Under voltage and Over Voltage. It can be set in 3 different modes (Manual, Auto & Bypass) to suit the farmer's requirement.



Name	Motor Rating At 415V 3ph 50Hz HP / kW		Range (A)	Starter Type	Contactor \$	Thermal Overload relay	MRP
	HP	kW					
RAJA+ H ADOL 7.5HP	7.5	5.5	10-16	3TE7111-2SC18-1A**	3TS3210-0A**-08K	3UW5102-2A	11270.-
RAJA+ H ADOL 10HP	10/12.5	7.5/9.3	16-25	3TE7111-2CC21-1A**	3TS3311-0A**-08K	3UW5202-2C	11975.-
RAJA+ H ADOL 12.5HP	12.5	9.3	20-32	3TE7111-2DC23-1AZ8	3TS3511-0AZ8-08K	3US5600-2D8K	12320.-
RAJA+ H ADOL 15HP	15	11	25-36	3TE7111-2QC24-1AZ8	3TS3511-0AZ8-08K	3US5600-2Q8K	14680.-
RAJA+ H ADOL 17.5HP	17.5	13	32-40	3TE7111-2RC25-1AZ8	3TS3611-0AZ8-08K	3US5600-2R8K	15030.-

Name	Motor Rating At 415V 3ph 50Hz HP / kW		Range (A)	Starter Type	Contactor \$	Thermal Overload relay	MRP
	HP	kW					
RAJA+ ADOL 10HP	10	7.5	12.5-20	3TE7111-2BC21-1A**	3TS3311-0A**-08K	3UW5102-2B	11465.-
RAJA+ ADOL 15HP	15	11	16-25	3TE7111-2CC24-1A**	3TS3411-0A**-08K	3UW5202-2C	14025.-

**Enter code for coil voltage Z8 is 260 - 460V AC; Z6 is 200 - 400V AC

RAJA+ GSM Starters & Controllers

Smart, Efficient &
Sustainable



NEW



Complete Range
for all Agricultural
Applications



Android based application
for extensive
customization



Easy to Install
Just Plug & Play



Complete Wireless
Operation



Built In Protection
against all major Faults



Anti Theft
Feature

Combine it with our unique Android-based Application
to further enhance your smart farming experience.



Complete pump
operation status in one
place/one touch



In built scheduler for
flexible On/Off timings



Compliant to all data
privacy and security
laws



SIEMENS

RAJA+ DOL Controllers & FASD With GSM

NEW

Type numbers: 3TE7141 & 3TE7441

- Motor Rating at 415V 3ph 50Hz : 3 – 10HP | 2.2 – 7.5kW DOL
10 – 40HP | 7.5 – 30kW FASD
- Contactors | OLRs: 3TS contactors | 3US overload Relay
- Coil Voltage: 200 – 400V | 260 – 457V AC, 50Hz
- In Built GSM Module for Communication
- “Complete protection against Line Faults: Phase Loss, Phase Reversal, Phase Unbalance, Under voltage and Over Voltage”
- IP43



Direct Online Controller (DOL) With GSM

Model	Motor / Submersible Pump Rating At 415V 3ph 50Hz HP/kW	Range (A)	Starter Type	Contactor	Thermal Overload relay	MRP
RAJA+ DOL GSM	3/2.2	5-8	3TE7141-1HC141A**	3TS3010-0A**-08K	3US5000-1H8K	32225.-
RAJA+ DOL GSM	5/3.7	8-12.5	3TE7141-1KC161A**	3TS3110-0A**-08K	3UW5102-1K	32225.-
RAJA+ DOL GSM	6/4.5	10-16	3TE7141-2AC171A**	3TS3210-0A**-08K	3UW5102-2A	32225.-
RAJA+ DOL GSM	7.5/5.5	12.5-20	3TE7141-2BC181A**	3TS3210-0A**-08K	3UW5102-2B	35630.-
RAJA+ DOL GSM	10/7.5	16-25	3TE7141-2CC211A**	3TS3311-0A**-08K	3UW5202-2C	38450.-

Fully Automatic Star Delta (FASD) Starter With GSM

Name	Submersible Pump Rating At 415V 3ph 50Hz		Relay range (A)	Type	Line/ Delta Contactor	Star Contactor	Thermal Overload relay	MRP
	HP	Kw						
RAJA+ FASD GSM 10 HP	10	7.5	6.3-10	3TE74411JC211A**	3TS3110-0A##-08K	3TS3010-0A##-08K	3UW5102-1J	48955.-
RAJA+ H FASD GSM 10 HP	10	7.5	8-12.5	3TE74411KC211A**	3TS3210-0A##-08K	3TS3010-0A##-08K	3UW5102-1K	48955.-
RAJA+ FASD GSM 15 HP	15	11	10-16	3TE74412AC241A**	3TS3300-0A##-08K	3TS3110-0A##-08K	3UW5202-2A	48955.-
RAJA+ H FASD GSM 15 HP	15	11	12.5-20	3TE74412BC241A**	3TS3300-0A##-08K	3TS3110-0A##-08K	3UW5202-2B	49690.-
RAJA+ FASD GSM 20 HP	20	15	12.5-20	3TE74412BC261A**	3TS3300-0A##-08K	3TS3110-0A##-08K	3UW5202-2B	55840.-
RAJA+ H FASD GSM 20 HP	20/30	15/22	20-32	3TE74412DC261AZ8	3TS3500-0AZ8-08K	3TS3300-0AZ8-08K	3US5600-2D8K	65520.-
RAJA+ FASD GSM 25 HP	25	18.5	16-25	3TE74412CC271AZ8	3TS3500-0AZ8-08K	3TS3210-0AZ8-08K	3US5600-2C8K	55945.-
RAJA+ H FASD GSM 30 HP	30/40	22/30	32-40	3TE74412RC281AZ8	3TS3500-0AZ8-08K	3TS3400-0AZ8-08K	3US5600-2R8K	100075.-

**Enter code for coil voltage Z8 is 260 - 460V AC; Z6 is 200 - 400V AC

RAJA+ Controllers & FASD

For a worry-free Irrigation

Complete Range of Starters and Controllers for Submersible pump application with Inbuilt protection and monitoring for a safe and sustainable irrigation.



With Inbuilt
Single-Phase Preventer



On Delay for delayed
and safe starting



Patented Technology
for fault Indication



Protection against Over Voltage,
Under Voltage, Single Phasing,
Phase Reversal & Phase Unbalance

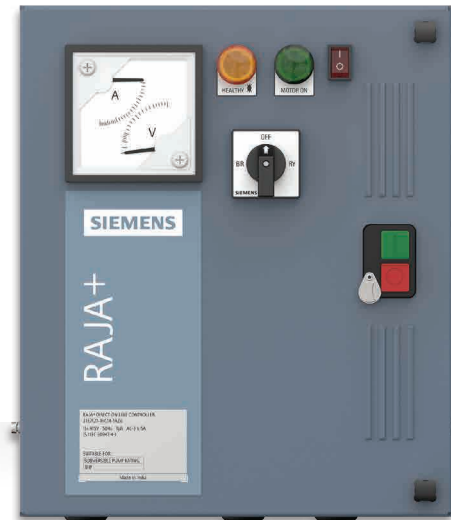


Auto switch for
automatic restart after
fault recovery

Direct-On-Line Controller

Type numbers: 3TE7121

- Motor Rating at 415V 3ph 50Hz: 3 – 10HP | 2.2 – 7.5kW
- Clearly defined ratings for submersible pump set & for 3-phase Motors
- Contactors | OLRs: 3TS contactors | 3US overload Relay
- Coil Voltage: 200 – 400V | 260 – 457V AC, 50Hz
- IP43
- LED Indication: Amber LED Indicating the incoming power supply availability & healthiness
- Green LED Motor on indication
- AV meter for current, voltage indication
- Special Line Monitoring Relay for Agriculture Starters provide protection against Phase Loss, Phase Reversal, Phase Unbalance, Under voltage and Over Voltage. It can be set in 3 different modes (Manual, Auto & Bypass) to suit the farmer's requirement.



Name	Motor / Submersible Pump Rating At 415V 3ph 50Hz HP/kW	Range (A)	Starter Type	Contactor \$	Thermal Overload relay	MRP
RAJA+ H DOL C 3HP	3/2.2	5-8	3TE7121-1HC14-1A**	3TS3010-0A**-08K	3US5000-1H8K	15180.-
RAJA+ H DOL C 5HP	5/3.7	8-12.5	3TE7121-1KC16-1A**	3TS3110-0A**-08K	3UW5102-1K	15180.-
RAJA+ H DOL C 6HP	6/4.5	10-16	3TE7121-2AC17-1A**	3TS3210-0A**-08K	3UW5102-2A	15180.-
RAJA+ H DOL C 7.5HP	7.5/5.5	12.5-20	3TE7121-2BC18-1A**	3TS3210-0A**-08K	3UW5102-2B	17880.-
RAJA+ H DOL C 10HP	10/7.5	16-25	3TE7121-2CC21-1A**	3TS3311-0A**-08K	3UW5202-2C	20115.-

**Enter code for coil voltage Z8 is 260 - 460V AC; Z6 is 200 - 400V AC

Direct-On-Line Controller with WLC

Type numbers: 3TE7131

- Motor Rating at 415V 3ph 50Hz: 3 – 10HP | 2.2 – 7.5kW
- Clearly defined ratings for submersible pump set & for 3-phase Motors
- Contactors | OLRs: 3TS contactors | 3US overload Relay
- Coil Voltage: 200 – 400V | 260 – 457V AC, 50Hz
- IP43
- LED Indication: Amber LED Indicating the incoming power supply availability & healthiness
- Green LED Motor on indication
- AV meter for current, voltage indication
- With Integrated Water level controller
- Special Line Monitoring Relay for Agriculture Starters provide protection against Phase Loss, Phase Reversal, Phase Unbalance, Under voltage and Over Voltage. It can be set in 3 different modes (Manual, Auto & Bypass) to suit the farmer's requirement.



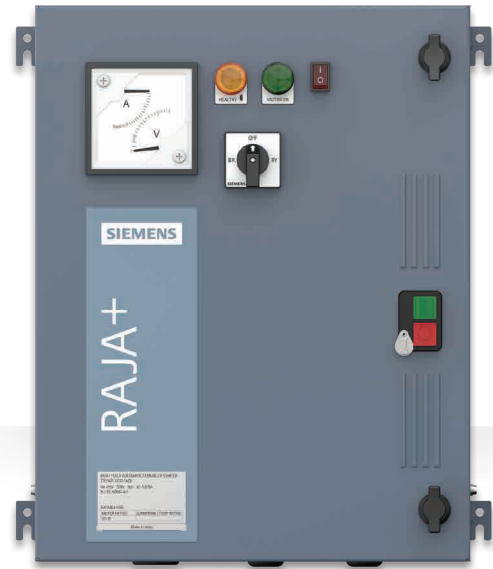
Name	Motor / Submersible Pump Rating At 415V 3ph 50Hz HP/kW	Range (A)	Starter Type	Contactor	Thermal Overload relay	MRP
RAJA+ H DOL CW 3HP	3/2.2	5-8	3TE7131-1HC14-1A**	3TS3010-0A**-08K	3US5000-1H8K	22475.-
RAJA+ H DOL CW 5HP	5/3.7	8-12.5	3TE7131-1KC16-1A**	3TS3110-0A**-08K	3UW5102-1K	22475.-
RAJA+ H DOL CW 6HP	6/4.5	10-16	3TE7131-2AC17-1A**	3TS3210-0A**-08K	3UW5102-2A	22745.-
RAJA+ H DOL CW 7.5HP	7.5/5.5	12.5-20	3TE7131-2BC18-1A**	3TS3210-0A**-08K	3UW5102-2B	22945.-
RAJA+ H DOL CW 10HP	10/7.5	16-25	3TE7131-2CC21-1A**	3TS3311-0A**-08K	3UW5202-2C	24870.-

**Enter code for coil voltage Z8 is 260 - 460V AC; Z6 is 200 - 400V AC

Fully Automatic Star Delta Starter

Type numbers: 3TE7421

- Motor Rating at 415V 3ph 50Hz: 10 – 75HP | 7.5 – 55kW
- Clearly defined ratings for submersible pump set & for 3-phase Motors
- Contactors | OLRs: 3TS contactors | 3US overload Relay
- Coil Voltage: 200 – 400V | 260 – 457V | 332 – 457V | 304 – 418V AC, 50Hz
- IP43
- LED Indication: Amber LED Indicating the incoming power supply availability & healthiness
- Green LED Motor on indication
- AV meter for current, voltage indication
- Special Line Monitoring Relay for Agriculture Starters provide protection against Phase Loss, Phase Reversal, Phase Unbalance, Under voltage and Over Voltage. It can be set in 3 different modes (Manual, Auto & Bypass) to suit the farmer's requirement.



Name	Submersible Pump Rating At 415V 3ph 50Hz		Relay range (A)	Type	Line/ Delta Contactor	Star Contactor	Thermal Overload relay	MRP
	HP	Kw						
RAJA+ FASD 10HP	10	7.5	6.3-10	3TE7421-1JC21-1A##	3TS3110-0A##-08K	3TS3010-0A##-08K	3UW5102-1J	28415.-
RAJA+ FASD 15HP	15	11	10-16	3TE7421-2AC24-1A##	3TS3300-0A##-08K	3TS3110-0A##-08K	3UW5202-2A	28415.-
RAJA+ FASD 20HP	20	15	12.5-20	3TE7421-2BC26-1A##	3TS3300-0A##-08K	3TS3110-0A##-08K	3UW5202-2B	33870.-
RAJA+ FASD 25HP	25	18.5	16-25	3TE7421-2CC27-1AZ8	3TS3500-0AZ8-08K	3TS3210-0AZ8-08K	3US5600-2C8K	33945.-
RAJA+ FASD 50HP	50	37	36-45	3TE7421-8MC33-1A\$\$	3TS4722-0A\$\$-08K	3TS3500-0A\$\$-08K	3US5600-8M8K	85545.-
RAJA+ FASD 75HP	75	55	50-63	3TE7421-2PC35-1A\$\$	3TS4822-0A\$\$-08K	3TS4722-0A\$\$-08K	3US5800-2P8K	142970.-

Name	Submersible Pump Rating At 415V 3ph 50Hz		Relay range (A)	Type	Line/ Delta Contactor	Star Contactor	Thermal Overload relay	MRP
	HP	Kw						
RAJA+ H FASD 10HP	10	7.5	8-12.5	3TE7421-1KC21-1A##	3TS3210-0A##-08K	3TS3010-0A##-08K	3UW5102-1K	28415.-
RAJA+ H FASD 15HP	15/17.5	11/13	12.5-20	3TE7421-2BC24-1A##	3TS3300-0A##-08K	3TS3110-0A##-08K	3UW5202-2B	28995.-
RAJA+ H FASD 20HP	20/30	15/22	20-32	3TE7421-2DC26-1AZ8	3TS3500-0AZ8-08K	3TS3300-0AZ8-08K	3US5600-2D8K	41525.-
RAJA+ H FASD 30HP	30/40	22/30	32-40	3TE7421-2RC28-1AZ8	3TS3500-0AZ8-08K	3TS3400-0AZ8-08K	3US5600-2R8K	60675.-
RAJA+ H FASD 40HP	40	30	40-57	3TE7421-2TC31-1A\$\$	3TS4722-0A\$\$-08K	3TS3500-0A\$\$-08K	3US5800-2T8K	90740.-
RAJA+ H FASD 50HP	50	37	40-57	3TE7421-2TC33-1A\$\$	3TS4722-0A\$\$-08K	3TS3600-0A\$\$-08K	3US5800-2T8K	107255.-
RAJA+ H FASD 75HP	75	55	85-105	3TE7421-5CC35-1A\$\$	3TS5122-0A\$\$-08K	3TS4822-0A\$\$-08K	3US5800-5C8K	150590.-

Enter code for coil voltage Z8 is 260 - 460V AC; Z6 is 200 - 400V AC
 \$\$ Enter code for coil voltage R0 is 332 - 457V AC; Q0 is 304 - 418V AC

Fully Automatic Star Delta Controller with WLC

Type numbers: 3TE7431

- Motor Rating at 415V 3ph 50Hz: 15 – 30HP | 11 – 22kW
- Clearly defined ratings for submersible pump set & for 3-phase Moto
- Contactors | OLRs: 3TS contactors | 3US overload Relay
- Coil Voltage: 200 – 400V | 260 – 457V AC, 50Hz
- IP43
- LED Indication:
 - Amber LED Indicating the incoming power supply availability & healthiness
 - Green LED Motor on indication
- Voltage Selector Switch
- With Integrated Water level controller
- Special Line Monitoring Relay for Agriculture Starters provide protection against Phase Loss, Phase Reversal, Phase Unbalance, Under voltage and Over Voltage. It can be set in 3 different modes (Manual, Auto & Bypass) to suit the farmer's requirement.



Name	Motor / Submersible Pump Rating At 415V 3ph 50Hz HP/ kW	Relay range (A)	Type	Line/ Delta Contactor	Star Contactor	Thermal Overload relay	MRP
RAJA+ H FASD CW 15HP	15/11	12.5-20	3TE7431-2BC24-1A**	3TS3300-0A**-08K	3TS3110-0A**-08K	3UW5202-2B	40155.-
RAJA+ H FASD CW 17.5HP	17.5/13	16-25	3TE7431- 2CC25-1AZ8	3TS3500-0AZ8-08K	3TS3300-0AZ8-08K	3US5600-2C8K	40340.-
RAJA+ H FASD CW 20HP	20/15	20-32	3TE7431-2DC26-1AZ8	3TS3500-0AZ8-08K	3TS3300-0AZ8-08K	3US5600-2D8K	49690.-
RAJA+ H FASD CW 25HP	25/18.5	20-32	3TE7431-2DC27-1AZ8	3TS3500-0AZ8-08K	3TS3400-0AZ8-08K	3US5600-2D8K	60265.-
RAJA+ H FASD CW 30HP	30/22	25-36	3TE7431-2RC28-1AZ8	3TS3500-0AZ8-08K	3TS3400-0AZ8-08K	3US5600-2Q8K	67840.-

**Enter code for coil voltage Z8 is 260 - 460V AC; Z6 is 200 - 400V AC

RAJA+ Spares



Contactor

#	MLFB	A3 (A)	MRP/LP
1	3TS3010-0AZ6-08K	9A	2180.-
2	3TS3010-0AZ8-08K	9A	2535.-
3	3TS3110-0AZ6-08K	12A	2710.-
4	3TS3110-0AZ8-08K	12A	2900.-
5	3TS3210-0AZ6-08K	18A	2870.-
6	3TS3210-0AZ8-08K	18A	2820.-
7	3TS3300-0AZ6-08K	25A	3830.-
8	3TS3300-0AZ8-08K	25A	3865.-
9	3TS3311-0AZ6-08K	25A	5560.-
10	3TS3311-0AZ8-08K	25A	5600.-
11	3TS3400-0AZ8-08K	32A	8000.-
12	3TS3411-0AZ6-08K	32A	9475.-
13	3TS3411-0AZ8-08K	32A	9530.-
14	3TS3500-0AQ0-08K	40A	11045.-
15	3TS3500-0AR0-08K	40A	11050.-
16	3TS3500-0AZ8-08K	40A	11645.-
17	3TS3511-0AZ8-08K	40A	12915.-
18	3TS3600-0AQ0-08K	50A	14990.-
19	3TS3600-0AR0-08K	50A	15325.-
20	3TS3611-0AZ8-08K	50A	16915.-
21	3TS4722-0AQ0-08K	65A	20870.-
22	3TS4722-0AR0-08K	65A	21755.-
23	3TS4822-0AQ0-08K	75A	27010.-
24	3TS4822-0AR0-08K	75A	28320.-
25	3TS5122-0AQ0-08K	140A	48650.-
26	3TS5122-0AR0-08K	140A	51515.-
27	3TS3201-0AZ6-08K	18A	2870.-
28	3TS3210-0AR0-08K	18A	2695.-
29	3TS3300-0AR0-08K	25A	3455.-
30	3TS3201-0AR0-08K	18A	2695.-
31	3TS3210-0AR0-08K	12A	2695.-
32	3TS3010-0AZ608KA0	9A	2305.-
33	3TS3210-0AZ608KA0	18A	3005.-
34	3TS3010-0AR008KA0	9A	2305.-
35	3TS3210-0AR008KA0	18A	3005.-
36	3TS3010-0AZ80-8KA0	9A	2515.-
37	3TS3210-0AZ80-8KA0	18A	2395.-

Coil

#	Description	Coil (V)	MRP/LP
1	Coil for 415V (3TS30-34)	3TY7403-0AR0	Price on Request
2	Coil for 260-460V (3TS30-34)	3TY7403-0AW415	
3	Coil for 200-400V (3TS30-34)	3TY7403-0AZ6	
4	Coil for 380V (3TS35/36)	3TY7443-0AQ0	
5	Coil for 415V (3TS35/36)	3TY7443-0AR0	
6	Coil for 260-460V (3TS35)	3TY7443-0AW415	
7	Coil for 380V (3TS47/48)	3TY7463-0AQ0	
8	Coil for 415V (3TS47/48)	3TY7463-0AR0	
9	Coil for 380V (3TS51)	3TY7503-0AQ0	
10	Coil for 415V (3TS51)	3TY7503-0AR0	



Overload Relay

#	MLFB	Range	MRP/LP
1	3US5000-1H8K	5-8	3590.-
2	3US5600-2C8K	16-25	6070.-
3	3US5600-2D8K	20-32	6500.-
4	3US5600-2Q8K	25-36	6500.-
5	3US5600-2R8K	32-40	6800.-
6	3US5600-8M8K	36-45	6800.-
7	3US5800-2P8K	50-63	10930.-
8	3US5800-2T8K	40-57	8740.-
9	3US5800-5C8K	85-105	11605.-
10	3UW5102-1J	6.3-10	Price on Request
11	3UW5102-1K	8-12.5	
12	3UW5102-2A	10-16	
13	3UW5102-2B	12.5-20	
14	3UW5202-2A	10-16	
15	3UW5202-2B	12.5-20	
16	3UW5202-2C	16-25	
17	3UW5102-0J	0.63-1	
18	3UW5102-1A	1-1.6	
19	3UW5102-1C	1.6-2.5	
20	3UW5102-1D	2-3.2	
21	3UW5102-1F	3.2-5	
22	3UW5102-1G	4-6.3	

RAJA+ Spares

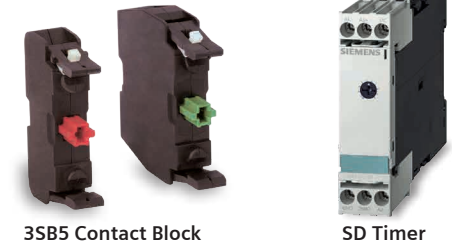
Other Spares

#	Description	MLFB	MRP/LP
1	Timer for 260-460V	3RP1576-1NM208K	4375.-
2	Timer for 200-400V	3RP1576-1NP208K	4375.-
3	Green LED	3SB5285-6HE06	920.-
4	Amber LED	3SB5285-6HL33	530.-
5	1NO Contact Block	3SB5420-0B	185.-
6	1NC Contact Block	3SB5420-0C	185.-
7	LMRA for 200-400V	7UG0613-0FE20	2060.-
8	LMRA for 260-460V	7UG0613-0FF20	2060.-
9	LMRA for 380V	7UG0613-0FG20	2060.-
10	LMRA for 415V	7UG0613-0FH20	2060.-
11	WLC 415V	7UG0685-0FJ21	3270.-
12	Sensor for WLC_set of 3	7UG0985-0YY00	1010.-
13	Selector Switch	3LD4001-4DC30-ORCO	440.-



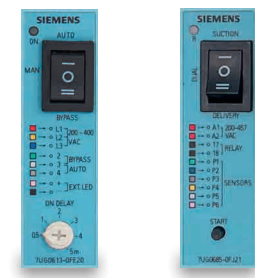
Selector Switch

LED



3SB5 Contact Block

SD Timer



LMRA

#	Description	MRP	Std. Pkg.
1	ROCKER SWITCH	155.-	10
2	CT 200A/5A Tape Wound	1200.-	1
3	Terminal block 30A	145.-	6
4	Terminal block 60A	290.-	5
5	Terminal block 100A	1080.-	1
6	VA Meter 100A	2040.-	1
7	VA Meter 60A	2040.-	1
8	VA Meter 30A	1920.-	1
9	VA Meter 5A	1920.-	1
10	Twin Push Button Latchable	170.-	10



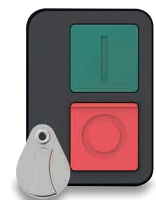
VA Meter



Rocker Switch



Terminal Block



Push Button

Your partners

Sales offices:

Ahmedabad

3rd Floor, Prerna Arbour, Chimanlal Girdharlal Road
Navrangpura, Near Girish Coldrinks
Ahmedabad, Gujarat - 380009
Tel: +91 79 30927600
Mobile: +91 9925001779
E-mail: chandrakant.keshrani@siemens.com

Baroda

1st Floor, Ishan Building, Sarabhai Campus
Beside Neptune Edge Building, Subhanpura
Vadodara, Gujarat - 390023
Mobile: +91 9429037805
E-mail: kalpeshkumar.darji@siemens.com

Bengaluru

2nd Floor, Jyoti Mahal, No. 49, St. Marks Road
Bengaluru - 560001
Tel: +91 80 33422000
Mobile: +91 988003710
E-mail: gauri.menoky@siemens.com

Bhubaneswar

Awfis, Ground Floor, Ginger, Opp. NALCO Bhavan
Jayadev Vihar, Nayapalli, Bhubhaneswar - 751013
Mobile: +91 8696222212
E-mail: rohit.nandan@siemens.com

Chandigarh

Flat No. 804, Tower 20, Motiaz Royal Citi
Punjab - 140603
Mobile: +91 9888484066
E-mail: padam.sharma@siemens.com

Territory managers:

Belagavi

CTS No-4011, Flat No. 301, 3rd Floor, Ambica Landmark Apartments
Bhagyanagar 2nd Cross, Belagavi - 590006
Mobile: +91 7483502752
E-mail: swapnil.adure@siemens.com

Bharuch

Bungalow No. 1, Sanskar Villa, Behind Yogi Petrol Pump
Narmada Chokdi, Zadeshwar, Bharuch - 392011
Mobile: +91 8884000998
E-mail: viral.kachhadia@siemens.com

Bhopal

D-3 Pebble Bay Phase 2, Bagmugaliya, Near IVY Global School
Bhopal - 462043, Madhya Pradesh
Mobile: +91 9926415756
E-mail: laxmi-narayan.dhakar@siemens.com

Boisar

A-505, 5th Floor, Fia Orion Grand
Near ISKON Temple, Palghar (East) - 401404
E-Mail: abhijit-prabhakar.salvi@siemens.com
Mobile: +91 9833905666

Chhatrapati Sambhajnagar (Aurangabad)

Room No. 1, Jyothirling Luxury Building, Waluj Mahanagar 1
Beside MSB Office, Chhatrapati Sambhajnagar - 431001
Mobile: +91 8087742504
E-Mail: vyankatesh.shendge@siemens.com

Cochin

E172, Federal Park, Vennala PO, Ernakulam - 682028
Mobile: +91 9447313241
E-mail: max.tom@siemens.com

Guwahati

Shivalaya Housing Society, Flat No. B-3A, Bylane 4, Joymatinagar
Adabari, Pandu, Guwahati - 781012, Assam
Mobile: +91 9864110684
E-mail: biplab.datta@siemens.com

Haridwar

41, Green Estate Phase- II
A2Z, Muzaffarnagar, Uttar Pradesh - 251001
Mobile: +91 9953256270
Email: vinod.nishad@siemens.com

Indore

Mobile: +91 9909904993
E-mail: piyush.thaker@siemens.com

Jalandhar

H.No. 212A, Punjabi Bagh Extn, Near Curo Mall
Jalandhar - 144001, India
Mobile: +91 9876047929
E-mail: sunil.singla@siemens.com

Kolhapur & Goa

Krushna Krupa Lake View, Flat No. 403
Jivba Nana Jadhav Road, Kolhapur - 416007
Mobile: +91 9970961852
E-mail: Jivan.kesarkar@siemens.com

Chennai

4th Floor, ETA Mount Central
Seethakathi Business Centre, Mount Road
Chennai - 600006
Tel: +91 44 30474000
Mobile: +91 9176609375
E-mail: muthu.kumar@siemens.com

Coimbatore

Regus, 6th Floor, Hanudev Infopark, Udayampalayam Main Rd
Nava India Rd, Coimbatore - 641028
Mobile: +91 8754403663
E-mail: ragesh.subramanian@siemens.com

Delhi / Gurgaon

DLF Cyber Park, Tower B, 10th Floor
Plot No. 405B, Udyog Vihar Phase-II
Gurugram - 122008, India
Mobile: +91 9971091588
E-mail: manjeet.mor@siemens.com

Hyderabad

5-9-19, 4th Floor, Lakshmi Narasinh Estate
Hyderabad - 500004
Tel: +91 40 2939 0089
Mobile: +91 9167527072
E-mail: kumar.cvs@siemens.com

Jaipur

Jaipur Centre Mall, Regus, 6th Floor, Cabin No. 633
Tonk Road, Jaipur - 302017
Mobile: +91 9818099433
E-mail: rajesh.raina@siemens.com

Kota

A-1, 1st Floor, Shrinath Estate, Railway Station Road
Kota - 324002, Rajasthan
Mobile: +91 9929110493
E-mail: rajendra.kabra@siemens.com

Ludhiana

House No. 91, Lane 25, Bhagya Homes
Rahon Road, Ludhiana - 141007, India
Mobile: +91 9872419990
E-mail: ravinder.pal@siemens.com

Madurai

B6, 17th Avenue Gladway Grencity, Avaniyapuram, Madurai - 625012
Mobile: +91 8667482574
E-mail: s.bhuvanesh.kanth@siemens.com

Nagpur

Plot No. 117, 118, 119, Flat No. 202, Yatharth Apartment
Mahalaxmi Society, Manish Nagar, Nagpur - 440015
Mobile: +91 9049610003
E-mail: sanjay.lonkar@siemens.com

Nashik

Nashik Works, Plot No. C1, Additional Industrial Area
MDC Ambad, Nashik - 422010, Maharashtra
Mobile: +91 9822193204
E-mail: dhananjay.thorat@siemens.com

Patna

Road No. 12A, Keshri Nagar
Near Veer Kunwar Singh Chowk, Patna - 800024
Mobile: +91 70701 92127
E-mail: kumar.rk.rakesh@siemens.com

Pondicherry & Trichy

Mobile: +91 8939883966
E-mail: kolappan.c@siemens.com

Raipur - 1

Jr. M.I.G 601, Chilpy Height, Bhawna Nagar
Near Shankar Nagar, Raipur - 492007
Mobile: +91 8823823438
E-mail: ashutosh-singh@siemens.com

Raipur - 2

Jr. M.I.G 503, Chilpy Height, Bhawna Nagar
Near Shankar Nagar, Raipur - 492007
Mobile: +91 9926511479
E-mail: ravindra.ughade@siemens.com

Rajkot

Flat No. 204, D Wing, Icon Platinum, Opp. Rani Residency
Behind Ayurvedik Hospital, University Road, Gujarat, Rajkot - 360005
Mobile: +91 9875038983
E-mail: jigneshkumar.dalsaniya@siemens.com

Ranchi

Astha Regency, Block-A, Flat No. 805, 8th Floor, Ratu Pandra Road
Piska More, PS-Sukhdeo Nagar, Ranchi, Jharkhand - 834005
Mobile: +91 7033537344
E-mail: soumitra.dutta@siemens.com

Jamshedpur

"My Branch", Fairdeal Complex, 1st Floor
Opp. Ram Mandir, Main Road, Bistupur
Jamshedpur, Jharkhand - 831001
Mobile: +91 8696222212
E-mail: rohit.nandan@siemens.com

Kolkata

1st Floor, 43, Shanti Palli, Rashbihari Bypass Connector
Kolkata - 700042
Tel: +91 33 30939000
Mobile: +91 9051015666
E-mail: amarnath.karmakar@siemens.com

Lucknow

B-1212/5, Indira Nagar
Lucknow, Uttar Pradesh - 226016
Mobile: +91 9918002525
E-mail: atul.shukla@siemens.com

Mumbai

2nd Floor, R&D Building, Kalwa Works, Thane Belapur Road
Airoli, Navi Mumbai - 400708
Tel: +91 22 39663000
Mobile: +91 9822467311
E-mail: abhijeet.dandekar@siemens.com

Pune

Tower C, Panchshil Business Park, Survey No. 20
Balewadi, Pune - 411045
Tel: +91 20 30466000
Mobile: +91 9983691888
E-mail: anurag.shah@siemens.com

Rourkela

U4/8, Civil Town Ship, Near Sailap Hospital, Rourkela - 769004
Mobile: +91 9861056581
E-mail: ashirbad.das@siemens.com

Rudrapur

Village – Nawar – Khera, Saheed Rajendra Singh Bhakuni Marg
PO - Kathgodam, Golapar, Haldwani - Distt Nainital
Ultrahand - 263126
Mobile: +91 9839174578
E-mail: girish.pandey@siemens.com

Salem

4/1, 2nd Street, Sakthi Nagar Annex, Judge Road
Ayyanthurimalgai Post, Salem - 636 008
E-Mail: rubengeralds@siemens.com
Mobile: +91 9894617772

Sonepat & Panipat

House No. 21, Virk Nagar, Near Sant Nagar
Nirankari Bhawan, Panipat - 132103
Mobile: +91 9911316981
E-mail: mohit.bisaria@siemens.com

Sricity

No. 84, Bazaar Street, Thandalam, Near Periyappalayam
Thiruvallur - 601102
Mobile: +91 9789824823
E-Mail: rvikram@siemens.com

Sriperumbudur

Villa 63, Shriram One City, Valarpuram, Sriperambudur - 602105
Mobile: +91 9344622236
Email: arshath.b@siemens.com

Surat

House No.12, Suvarnaraj Society, Opp. Nova Apex Apartments
Near Gantawala Panshop, Adajan, Surat - 395009
Mobile: +91 9904717949
E-mail: dhaval.tailor@siemens.com

Udaipur

E45, Sector 14, Behind Capital Tower, Udaipur - 313002, Rajasthan
Mobile: +91 8003088889
E-mail: ankur.pancholi@siemens.com

Vapi

Pramukh Vedanta, Alok Colony, Chala, Vapi - 396191, Gujarat
Mobile: +91 865512139
E-mail: deepak.gorad@siemens.com

Varanasi

Vrindavan Residency, Nuaon Bypass
Tikari Road, Dafi, Varanasi - 221011 (U.P.)
Mobile: +91 9984500021
E-mail: kumardeepak@siemens.com

Vijayawada

Door No. 12, Tarapat, Vijayawada - 520001
Mobile: +91 9966637966
E-mail: lakshmi-narayana.ramineni@siemens.com

Vizag

Mobile: +91 9849323838
E-mail: sivadurgaprasad.mondeti@siemens.com

Siemens Limited

Smart Infrastructure

Electrical Products

R&D Technology Centre

Thane Belapur Road

Airoli Node, Navi Mumbai - 400708

For more information contact toll free

1800 209 1800

E-mail: lvsg-rmktg.india@siemens.com

Order No.: SI-EP-CC-AGRI-0426

(This replaces SI-EP-CC-AGRI-1225

dated 01st December, 2025)

Customer Care Toll free no. 1800 209 0987

Email: ics.india@siemens.com

Product upgradation is a continuous process. Hence, data in this pricelist is subject to change without prior notice. For the latest information, please get in touch with your nearest Siemens Sales Office.